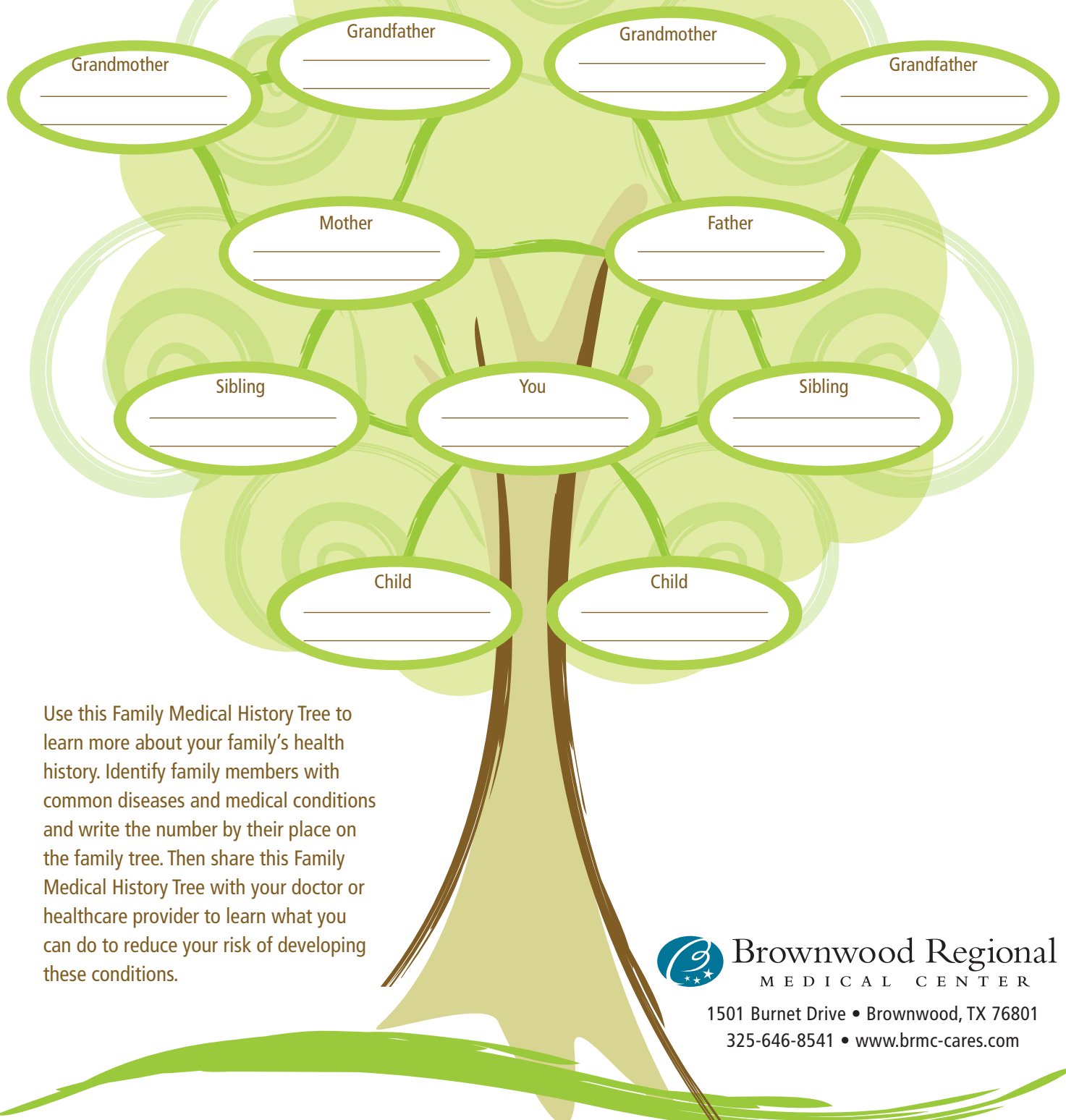


# Family Medical History Tree



Use this Family Medical History Tree to learn more about your family's health history. Identify family members with common diseases and medical conditions and write the number by their place on the family tree. Then share this Family Medical History Tree with your doctor or healthcare provider to learn what you can do to reduce your risk of developing these conditions.



**Brownwood Regional**  
MEDICAL CENTER

1501 Burnet Drive • Brownwood, TX 76801  
325-646-8541 • [www.brmc-cares.com](http://www.brmc-cares.com)

**Disease/Medical Condition Key** - write the number of the disease or condition by the blood relative associated with it.

- |                  |                        |                                |                           |                                 |
|------------------|------------------------|--------------------------------|---------------------------|---------------------------------|
| 1. Cancer        | 5. Arthritis           | 9. Stroke                      | 12. Birth defects         | 16. Mental retardation          |
| 2. Heart disease | 6. Mental illness      | 10. Kidney disease             | 13. Vision loss           | 17. Miscarriages or stillbirths |
| 3. Diabetes      | 7. High blood pressure | 11. Alcoholism/substance abuse | 14. Hearing loss          |                                 |
| 4. Asthma        | 8. High cholesterol    |                                | 15. Learning disabilities |                                 |